

350 TON COILED TUBING LIFT FRAME

DESCRIPTION

20 Tons Hoisting Winch

Control Stand w / Hoses

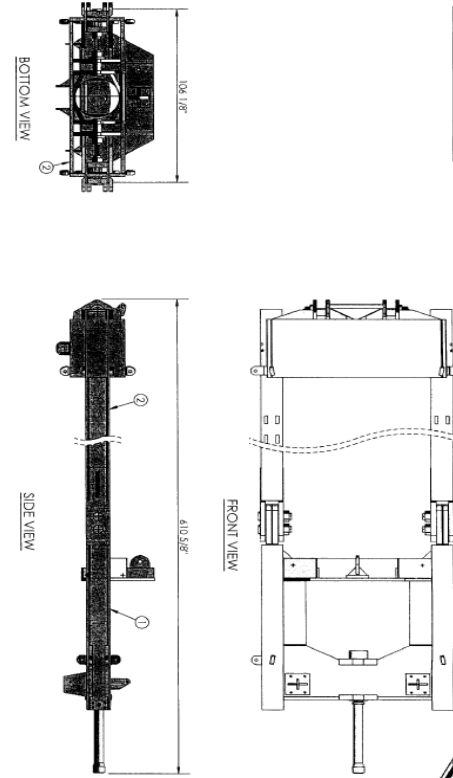
5" Lift Sub

DNV Design Review

Structure built in accordance with:

1. API 8C SECTION 7.2
2. AWS D1.1 Structural Welding Code - Steel
3. DNV DESIGN REVIEW
4. PULL TEST TO 1.5 TIMES WORK LOAD

- A one ton winch for lifting small tools to a one ton capacity
- Max working load is 700,000 lbs
- One flat sided platform for the rear of the frame
- A "U" shaped platform for the front, allowing access around the injector
- Both platforms adjustable up or down on the frame
- 5.5" lift sub, diameter of access hole is 20"
- Inline load cell



Specification

DESIGN LIMITATIONS

Max Design Load for operation: 350Tons

Side Door Elevator: 350 Tons

GG Elevator: 350 Tons

HPU: 3,000 psi

Minimum Design Temperature: -20⁰C

Minimum Sling Angle from Horizontal: 45⁰C

Lifting Capacity of Each Frame Lift Eye: 4536 kg
(10,000 lb)

Lifting Capacity Winch & Winch Deadeye: 18140 kg
(40,000 lb)

Lifting Capacity of Lifting Padeye: 2268 kg
(5,000 lb)

DIMENSIONS

Height (Outside): 51ft

Height (Inside): 36ft

Width (Inside): 6' 9" (81")

Width (Outside): 8' 10" (106)

Max Winch Capacity: 40,000 lbs

Winch Line: 200 Ft

TRANSPORT WEIGHTS

Lift Frame: 35,000 lbs

HPU: 4,000 lbs

Tool Basket w/Control Stand:2500 lbs

Side Door Elevator: 1,800 lbs